

EMI/EMC FILTER

IE1/ IE3 SERIES



FEATURES

- Suitable for the products that must conform to FCC, FTZ.
- Good shield effect by using metal case.
- Excellent filtering characteristics for both differential mode and common mode.
- Two stage for excellent filtering characteristics.
- Epoxy molded for reliability.
- Bidirectional structure effective for both noises from externally and internally generated.

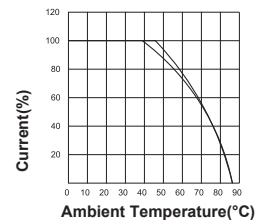
APPLICATIONS

- Communication equipments.
- Measuring and testing instruments.
- Digital equipments.
- Computers and peripherals.
- For equipments requiring very high noise attenuation.

SPECIFICATIONS

Model	Rated Voltage (AC,DC)	Rated Current	Leakage Current (250V AC)	Temperature Rise	Operating Temperature
IE3-F03	250V	3A	0.5mA max.	40°C max.	-25°C to + 85°C Including temperature rise ※ Fig.1
IE1-F03	250V	3A	0.5mA max.	45°C max.	
IE1-F06	250V	6A	0.5mA max.	45°C max.	
IE1-F10	250V	10A	0.5mA max.	45°C max.	

Note : Test Voltage : 1500V AC one minute, line to earth.
 Insulation Resistance : 300Mohm min. at 500VDC
 Leakage Current : 0.5mA max.
 Voltage Drop : 1V max. at rated current.
 Weight : 210g for IE1 series.
 200g for IE3 series.
 Inlet : Compatible IEC-60320.

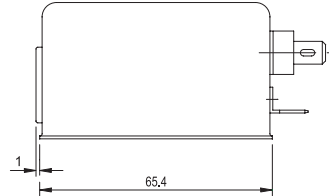
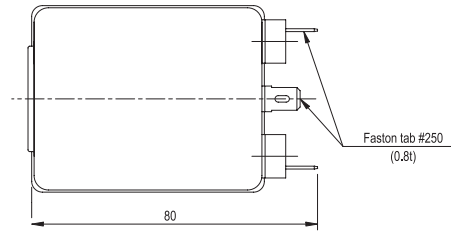
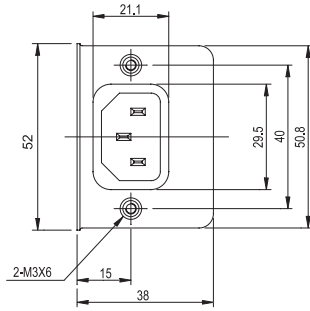


※ Fig.1

■ Model Number Construction

I	E1	F	03
Input Connector I : IEC Connector	Special Design E1 : 1-Stage filtering circuit E3 : 2-Stage filtering circuit	Output Terminal Style F : Faston Tab #250	Current Rating : AC rms 03 : 3 amp, 06 : 6 amp 10 : 10 amp

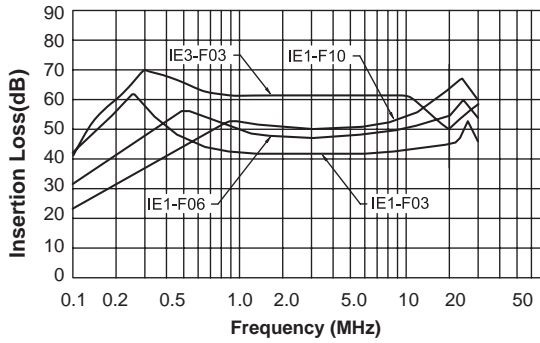
Shapes and Dimensions



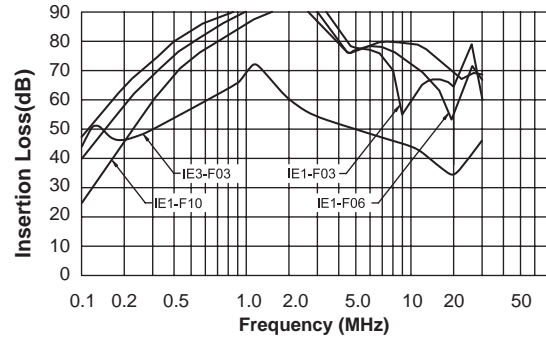
- * General tolerance : ± 1.0
- * Unit : mm
- * Metal Case

Attenuation Characteristics

● Common Mode (IE*-F* * types)

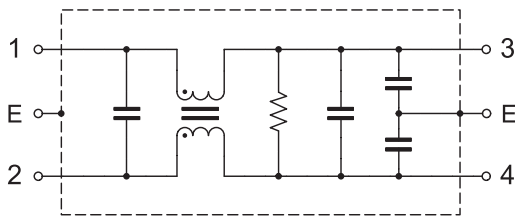


● Differential Mode (IE*-F* * types)

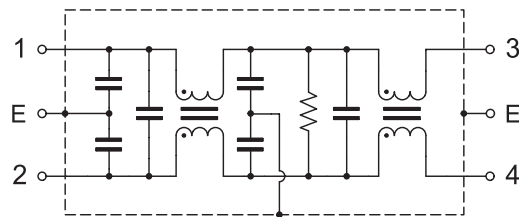


● Circuit Diagram

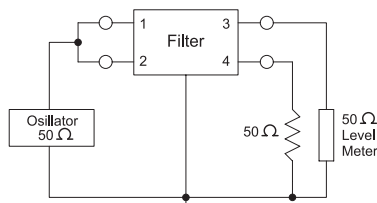
IE1 Series



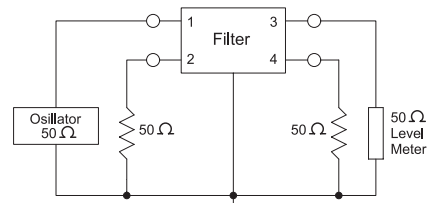
IE3 Series



● Measurement configuration



Common Mode



Differential Mode