

Surge Protector

SP-1000FA SERIES



FEATURES

- Protection from surge and transient voltage.
- Wire output type for small space and economical installation.
- Epoxy molded for reliability.

APPLICATIONS

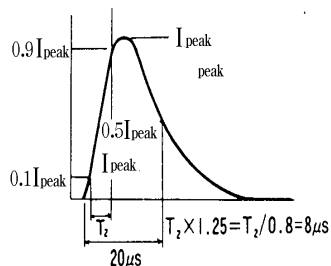
- Cellular base stations.
- Telecommunication networks power line
- Industrial control and power supplies.
- Industrial equipments like UPS, inverters, converters.

SPECIFICATIONS

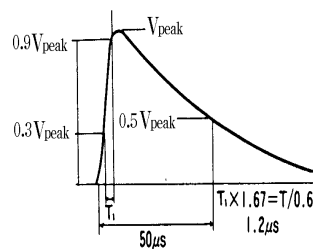
Model	Operating Voltage (DC @1mA)	Maximum Peak Current (8×20μs)	Max applied volts
SP-1000FA2	Line to Line : 387V~473V Line to Ground: 643V~837V	1kA	275VAC, 350VDC 175VAC, 225VDC
SP-1000FA5	Line to Line : Min 74V Line to Ground:	4.5kA	65VDC
SP-1000FA8	Line to Line : 423V~517V Line to Ground: 612V~748V	4.5kA	385VDC 560VDC

Surge Current & Voltage Curve

Current (8×20μs)



Voltage (1.2×50μs)



Shapes and Dimensions

