

# EMI/EMC FILTER

## TY1/SQ5 SERIES



### FEATURES

- 3-phase, 4-line type.
- Good shield effect by using metal case.
- Epoxy molded for reliability.
- Compact and economical.

※ UL Listed : SQ5 Only.

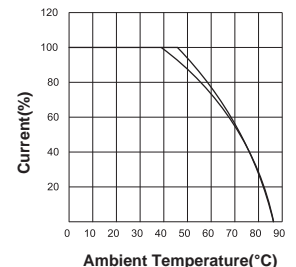
### APPLICATIONS

- Digital equipments.
- Suitable for FA equipments.
- Computerized washing machines.
- Industrial equipments like UPS, inverters, converters.

## SPECIFICATIONS

Model	Rated Voltage (AC)	Rated Current	Leakage Current (420V AC)	Temperature Rise	Operating Temperature
TY1-F03	420V	3A	1.0mA max.	30°C max.	-25°C to + 85°C Including temperature rise ※ Fig.1
TY1-F08	420V	8A	1.0mA max.	40°C max.	
SQ5-T/F16	420V	16A	4.0mA max.	45°C max.	

Note : Test voltage : 1500V AC one minute, line to earth.  
 Insulation Resistance : 300 Mohm min. at 500V DC.  
 Voltage Drop : 1V max. at rated current.  
 Weight : 250g for TY1-Series.  
 1450g for SQ5-Series.



※ Fig.1

#### ■ Model Number Construction

TY1



Case Style/3-Phase Filter  
 TY1: See Dimension next page  
 SQ5: See Dimension next page

F



Input/Output Terminal Style  
 F : Faston Tab #250  
 T : M4 Stud

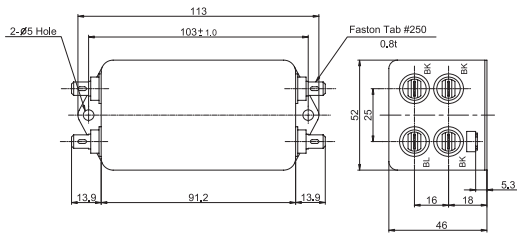
03



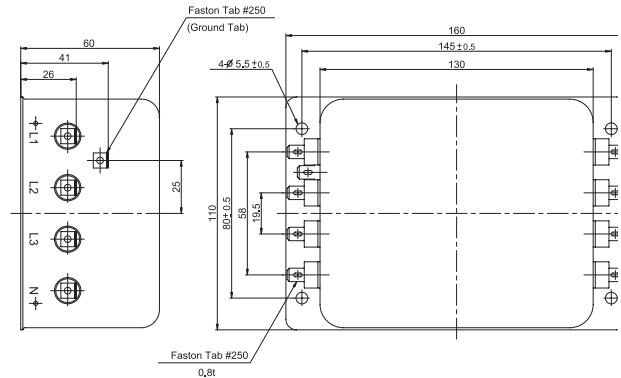
Current Rating : AC rms  
 03 : 3 amp (TY1-Series Only)  
 08 : 8 amp (TY1-Series Only)  
 16 : 16 amp (SQ5-Series Only)

# Shapes and Dimensions

## \* TY1 Series



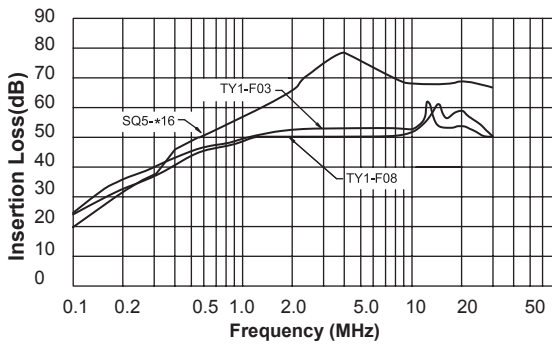
## \* SQ5 Series



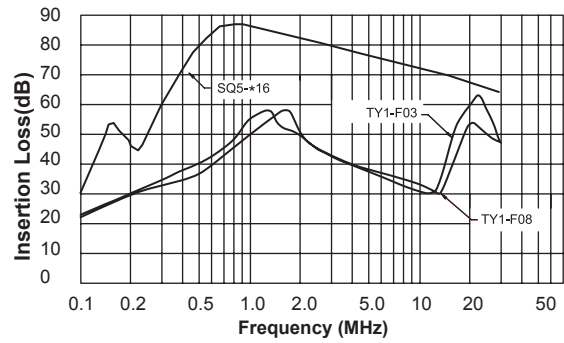
- \* General tolerance :  $\pm 1.5$
- \* Unit : mm
- \* Metal Case

# Attenuation Characteristics

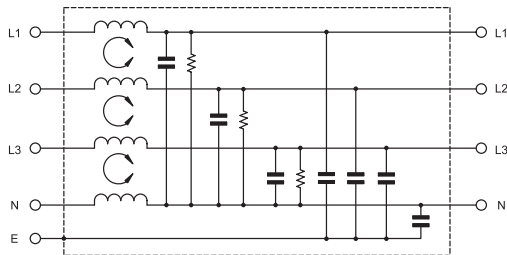
## ● Common Mode



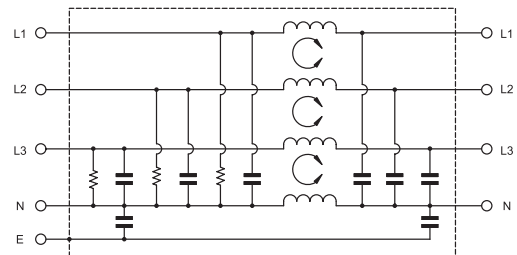
## ● Differential Mode



## ● Circuit Diagram (TY1 Series)



## ● Circuit Diagram (SQ5 Series)



## ● Measurement configuration

