

EMI/EMC FILTER

SW2 SERIES



FEATURES

- Suitable for the product that must conform to FCC, FTZ.
- Excellent filtering characteristics for both differential mode and common mode.
- Epoxy molded for reliability.
- Bidirectional structure effective for both noise from outside and internally generated.

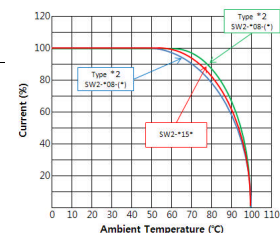
APPLICATIONS

- Digital equipments.
- Measuring instruments.
- Communication equipments.
- For equipment requiring very high impulse attenuation.
- Suitable for FA equipments.
- OA equipments like copy machine.
- Air conditioning equipment.

SPECIFICATIONS

Model	Rated Voltage (AC,DC)	Rated Current	Leakage Current (250V AC)	Temperature Rise 1 (*2)	Operating Temperature(°C)
SW2-*08-*	250V	8A	0.75mA max.	55°C(*40°C)	-25°C to +100 including temperature rise.
SW2-*15-*	250V	15A	0.75mA max.	45°C	

-25°C to +100 including temperature rise.



Note:

Test Voltage: 1500V AC one minute line to earth.

Insulation Resistance: 300Mohm min. at 500V DC.

Voltage Drop: 1V max. at rated current.

Weight: 180g

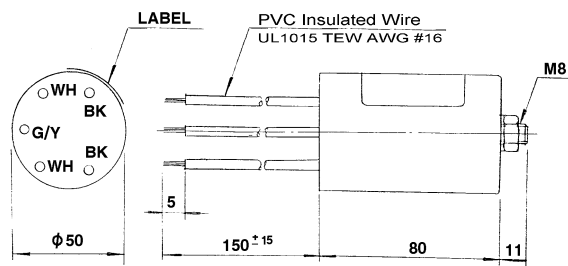
(*2) : Temperature rise when mounted on 200 x 200 x (t)1.0 mm steel sheet.

■ Model Number Construction

SW2	V	08	A
Series	Input/Output	Current Rating : ACrms	Line-Line Cap.Value
Description	Terminal style	08 : 8 amp	A, C, 1 : 1.0 μ F
: Cylinder Type	F : Faston Tab #250 V : PVC Wire With Ground Wire W : PVC Wire Without Ground Wire	15 : 15amp	B : 3.3 μ F
			Line-Ground Cap.Value
			A, B, C : 6600pF
			1 : 6800pF

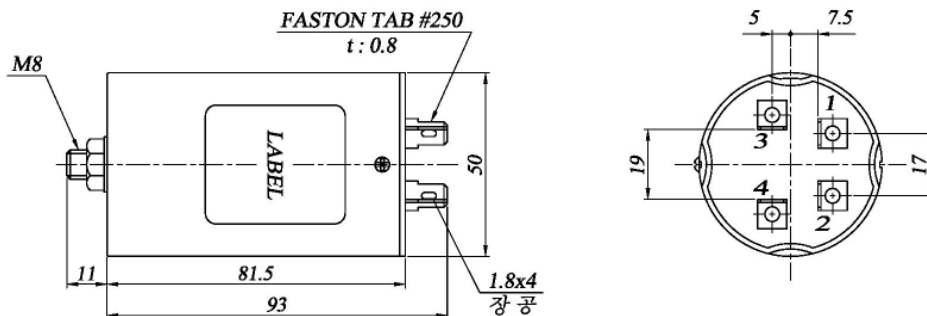
Shapes and Dimensions

SW2-V08-*



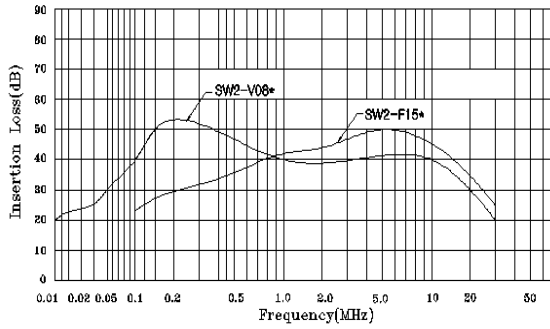
General Tolerance : ± 1

SW2-F15-*

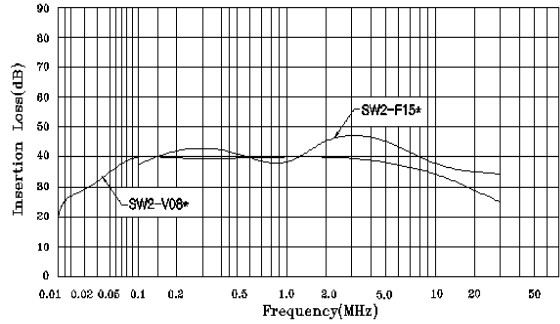


Attenuation Characteristics

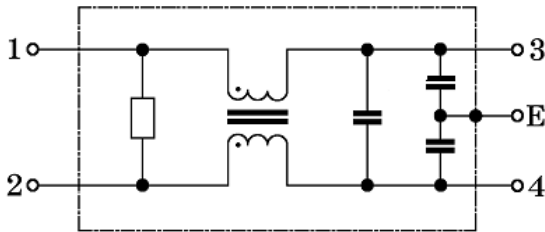
●Common Mode(SW2-*08/15*-*)



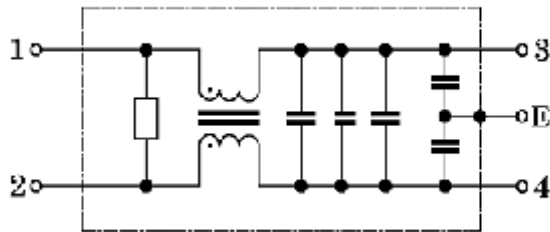
●Differential Mode(SW2-*08/15*-*)



●Circuit Diagram



SW2-(V/W)08-*



SW2-*15-*

●Measurement configuration

