

EMI/EMC FILTER



TBA SERIES



FEATURES

- Screw & DIN rail mount.
- Easy connection and installation. (DIN rail mount)
- Excellent filtering characteristics for both differential mode and common mode.
- Safety approval: KC, CQC, cCSAus, ENEC, SEMKO, CE.
- Good shield effect by using metal cover.

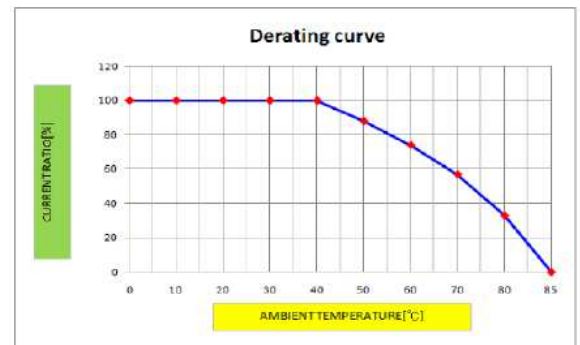
APPLICATIONS

- Use in industrial equipment, medical, gaming, other ground current-sensitive applications.
- For equipment requiring very high noise attenuation.
- Measuring and testing instruments.

SPECIFICATIONS

Model	Rated Voltage (AC, DC)	Rated Current Max.[A]	Leakage Current [at 250V, 60Hz] [mA]	Temperature Rise	Operating Temperature
TBA-06B44DA/B	250 (50/60Hz)	6	0.1	45°C max	-25°C to +85°C Including temperature rise
TBA-06B443A/B			0.5		
TBA-10B44DA/B		10	0.1		
TBA-10B443A/B			0.5		
TBA-16B44DA/B		16	0.1		
TBA-16B443A/B			0.5		
TBA-20B44DA/B		20	0.1		
TBA-20B443A/B			0.5		
TBA-30B44DA/B		30	0.1		
TBA-30B443A/B			0.5		

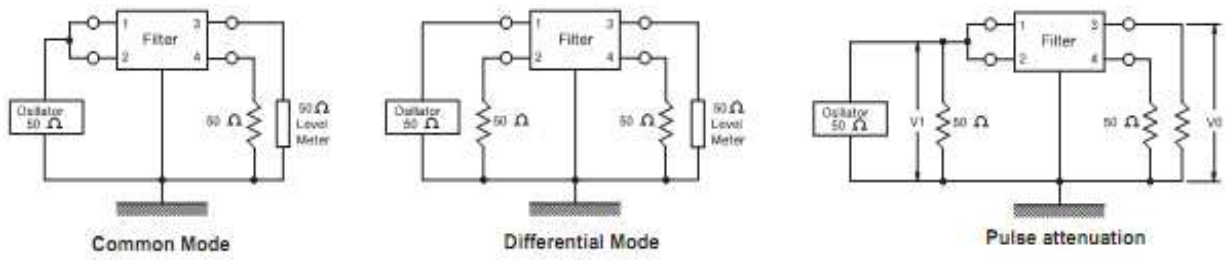
- Note: All types are designed to meet the requirement of UL1283, CSA 22.2
- Test Voltage: 1500V AC for 1 minute, line to ground. (TBA-**B443A/B)
4000V AC for 1 minute, line to ground. (TBA-**B44DA/B)
1800V DC for 1 minute, line to line. (without Resistor)
- Insulation Resistance: 300 MΩ minimum at 500V DC, line and ground.
- Voltage Drop: 1V max. at rated current.



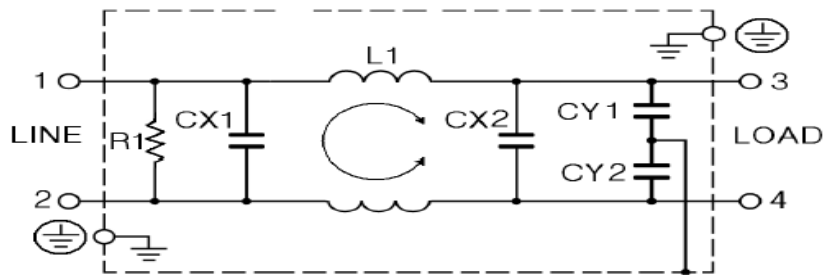
Model Number Construction

TB	A-	06	B	44	D	A/B
Terminal block	A: 표준 B: 소형	Rated Current 06 = 6 A 10 = 10 A 16 = 16 A 20 = 20 A 30 = 30 A	L1 μ: 5K	44=CX1,2: 0.47mF	D=CY1,2: 470pF 3=CY1,2: 3300pF	A: Screw Mounting B: Din Rail

MEASUREMENT CONFIGURATION



CIRCUIT DIAGRAM

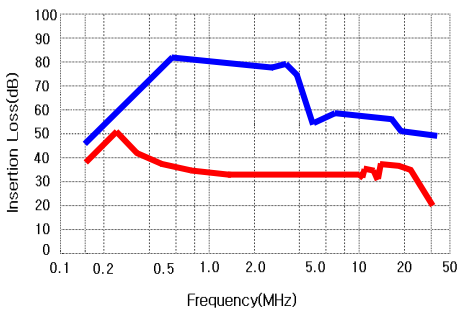


ATTENUATION CHARACTERISTICS

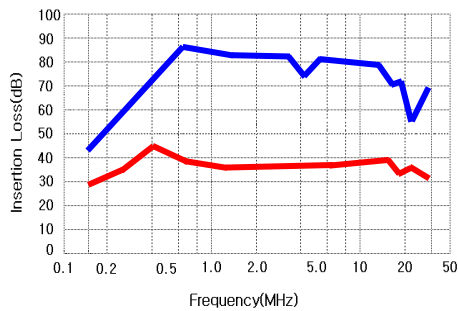
COMMON MODE (———)

NORMAL MODE (———)

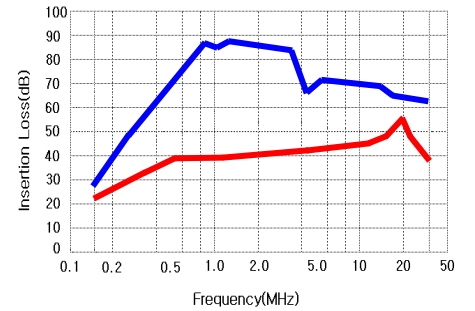
TBA-06443A/B



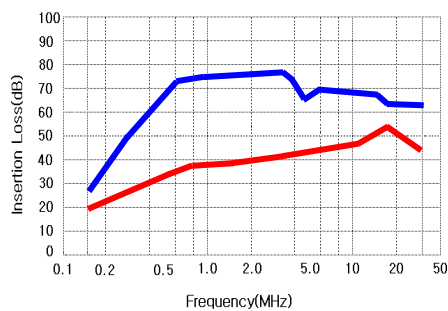
TBA-10443A/B



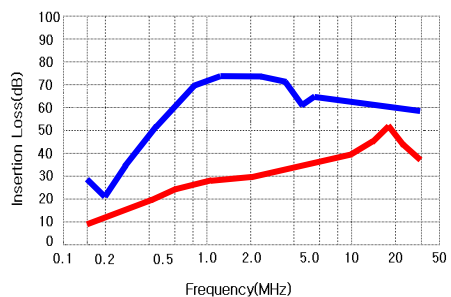
TBA-16443A/B



TBA-20443A/B

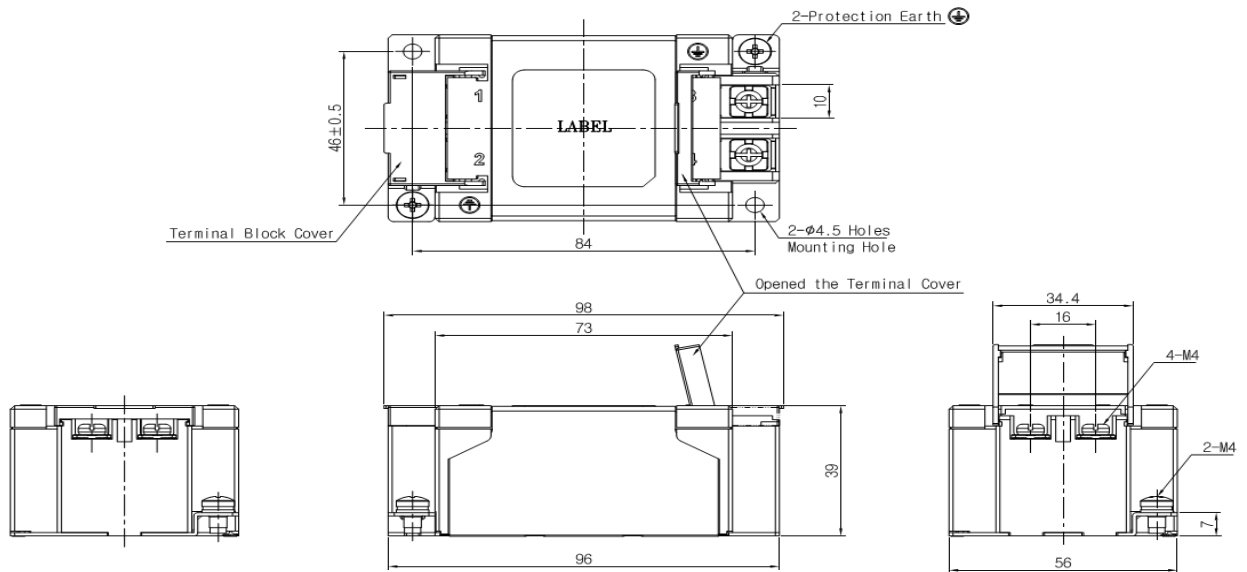


TBA-30443A/B



● SHAPES AND DIMENSTIONS [mm]

☒ TBA-****A TYPE(MOUNTING PLATE TYPE)



☒ TBA-****B TYPE(DIN RAIL TYPE)

