

EMI/EMC FILTER



TBB SERIES



FEATURES

- Screw & DIN rail mount.
- Easy connection and installation. (DIN rail mount)
- Excellent filtering characteristics for both differential mode and common mode.
- Safety approval: KC, CQC, cCSAus, ENEC, SEMKO, CE.
- Epoxy molded for reliability.

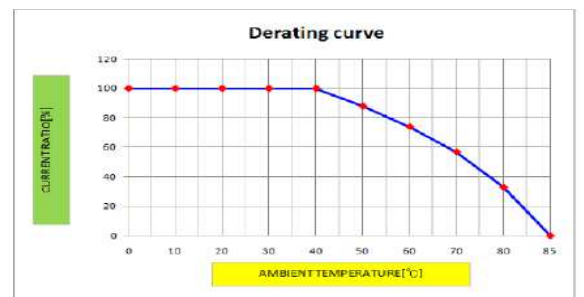
APPLICATIONS

- Use in industrial equipment, medical, gaming, other ground current-sensitive applications.
- For equipment requiring very high noise attenuation.
- Measuring and testing instruments.

SPECIFICATIONS

Model	Rated Voltage (AC, DC)	Rated Current Max.[A]	Leakage Current [at 250V, 60Hz] [mA]	Temperature Rise	Operating Temperature
TBB-06BDDDB	250 (50/60Hz)	6	0.1	45°C max	-25°C to +85°C Including temperature rise
TBB-06BDD3B			0.5		
TBB-10BDDDB		10	0.1		
TBB-10BDD3B			0.5		
TBB-16BDDDB		16	0.1		
TBB-16BDD3B			0.5		
TBB-20BDDDB		20	0.1		
TBB-20BDD3B			0.5		

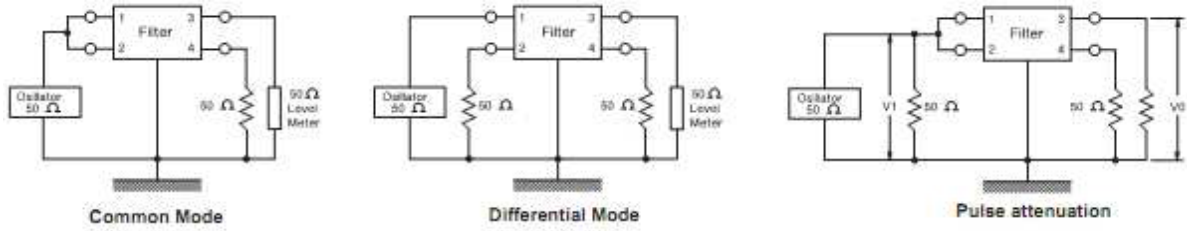
- Note: All types are designed to meet the requirement of UL1283, CSA 22.2.
- Test Voltage: 1500V AC for 1 minute, line to ground. (TBB-**BDD3B)
4000V AC for 1 minute, line to ground. (TBB-**BDDDB)
1800V DC for 1 minute, line to line. (without Resistor)
- Insulation Resistance: 300 MΩ minimum at 500V DC, line and ground.
- Voltage Drop: 1V max. at rated current.



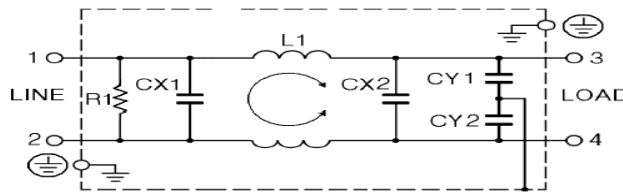
Model Number Construction

TB	B-	06	B	DD	D	B
Terminal block	A: 표준 B: 소형	Rated Current 06 = 6 A 10 = 10 A 16 = 16 A 20 = 20 A	L1 μ: 5K	DD=CX1,2: 0.33pF	D=CY1,2: 470pF 3=CY1,2: 3300pF	B: Screw & Din Rail

● MEASUREMENT CONFIGURATION



● CIRCUIT DIAGRAM



● ATTENUATION CHARACTERISTICS

COMMON MODE(———)

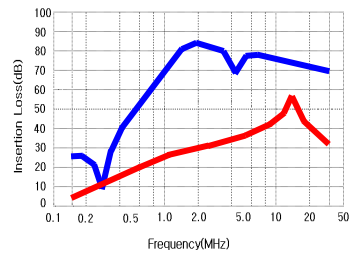
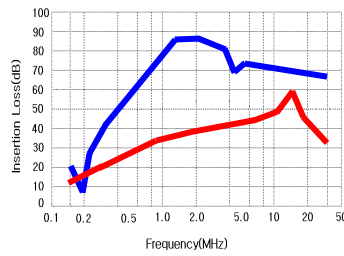
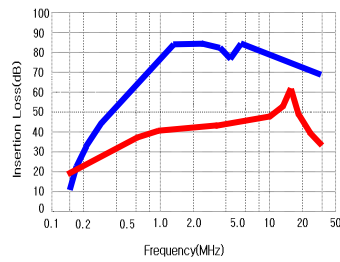
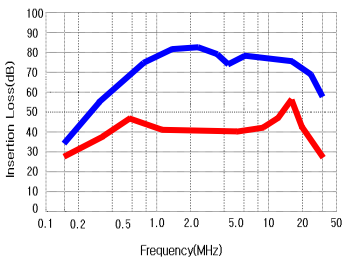
NORMAL MODE(———)

TBB-06DD3B

TBB-10DD3B

TBB-16DD3B

TBB-20DD3B



● SHAPES AND DIMENSIONS [mm]

